

IOWA SAS® USERS GROUP

4TH DES MOINES ONE-DAY CONFERENCE



MONDAY, MAY 24, 2010

Carver Conference and Learning Center

Pioneer Hi-Bred International, Inc.,

Co-Chairs: **John Xu** --- 1ST Consulting LLC
 Xiaoping Wang --- Iowa Department of Education

Section Chairs: Delayne Stokke --- Wells Fargo Home Mortgage
 Elaine Notis --- Pioneer Hi-Bred International
 Michael Harper --- Wellmark Blue Cross Blue Shield of Iowa

Sponsors:



Network with Fellow SAS® Users

Learn from the SAS Pro's

Three Concurrent Sessions with 14 Presentations

Three SAS Training Classes - New!

Scholarship for SAS Classes - New!

FREE Conference Registration - New!

Conference Information:

This one-day conference will provide an opportunity to enhance your SAS® skills and improve your understanding of the SAS® System. There will be 3 concurrent sessions throughout the day - And it's free! And the lunch is also free! Registration information is on page 18 of this announcement.

Additional, we will have 3 SAS classes in the same week after the conference.

Date: Monday, May 24, 2010

Location: Carver Conference and Learning Center (See map and direction at the end)
Pioneer Hi-Bred International Inc.
7200 NW 62nd Ave.
Johnston, Iowa 50131

Registration Fee: FREE for Early Registration by Friday May 14, 2010
\$50 for Late Registration after May 14, 2010

SAS Class: SAS Macro, Introduction to SQL, Advanced SQL (Extra fee)

Cancellation Policy: Please email to dsm1day@yahoo.com. Thanks!

Check in: Start at 8:00 AM on May 24, 2010.

Schedule: The Opening Session/Keynote will begin promptly at 9:00 AM. 3 concurrent sessions will start at 9:40 AM. Lunch at 11:30 AM. The afternoon sessions will start at 1:00 PM. The closing session will start at 4:00 PM and will conclude before 4:30 PM. See Conference Schedule page for the details.

Lunch: Lunch is sponsored by JMP and is free to attendees.

Hotel:

If you need to stay in a local hotel, you may call the following hotels for a reservation. Please mention that you are attending a meeting at Pioneer to get the special rate. Some hotels listed below provide breakfast and shuttle to/from airport and to/from Pioneer conference center. And most of them has free internet.

(1) Hilton Garden Inn Johnston, 8600 Northpark Drive, Johnston, IA \$67/night
(515) 727-4949 hiltongardeninn.hilton.com/en/gi/hotels/index.jhtml?ctyhocn=DSMUHGI

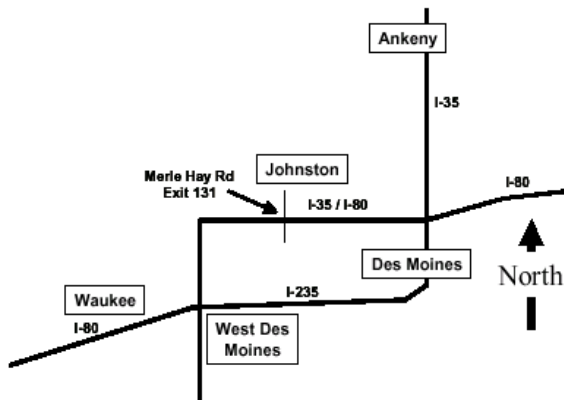
(2) Towneplace Suites, 8800 Northpark Drive, Johnston, IA \$64/night
(515) 727-4066 www.marriott.com/hotels/travel/dsmur-towneplace-suites-des-moines-urbandale/

(3) Stoney Creek Inn, 5291 Stoney Creek Court, Johnston, IA \$67/night
(515) 334-9000 www.stoneycreekinn.com/locations/rooms/index.cfm/DesMoines

(4) Additional hotels with corp discount: Comfort Suites At Living History Farms, Drury Inn in West Des Moines, Sheraton West Des Moines Hotel, Ramada Conference Center Des Moines, Holiday Inn Northwest

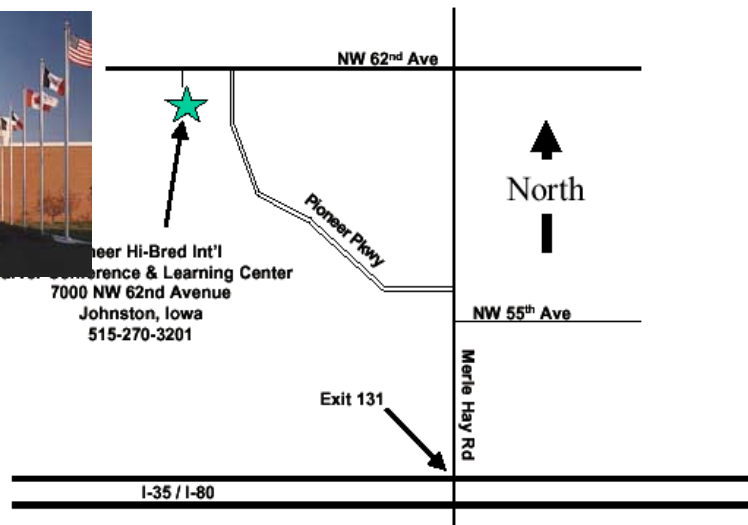
Questions:

For an answer, just e-mail your question to John Xu:
johnxu@1st-consulting.com (515)778-4093(c)



**Directions to
Pioneer Hi-Bred International, Inc.
(Carver Conference & Learning Center)**

From I-80/35 take the Merle Hay Road exit, # 131. At the exit ramp go north onto Merle Hay Road. Take Merle Hay Road north about 1 mile to Pioneer Parkway and turn west (left). Follow this divided boulevard all the way to it's end at NW 62nd Avenue. Turn left to head west on NW 62nd Avenue. Continue to the main Pioneer Hi-Bred International, Inc. entrance. Turn left onto the main driveway. Park in the spaces in front of the building or in the lot across the drive.



Conference Schedule [number in () is the index in abstract section]

5/24	Session 1 (Auditorium)	Session 2 (next to Auditorium)	Session 3 (next to Session 2)
8:00 – 8:50	Check In		
9:00 – 9:35	Opening Session/ Keynote Speech <i>It's Five Years Later... Now Where Were We?</i> Rick Langston, SAS Institute (1)		
9:40 – 10:30	<i>The Next Generation: SAS® Enterprise Miner™ 6.1</i> Wayne Thompson, SAS Institute (4)	<i>Using SAS Arrays to Manipulate Data</i> Ben Cochran (8)	<i>It's All About Effective Visual Communication: Bessler's Favorite SAS Graphs</i> LeRoy Bessler (6)
10:40 – 11:30	<i>Scalability of Table Lookup Techniques</i> Rick Langston, SAS Institute (3)	<i>Application development with SAS Stored Process</i> John Xu (11)	<i>Reduce your electron footprint: improve the efficiency of your SAS® programs</i> Delayne Stokke (14)
11:30 – 13:00	Lunch, Sponsored by JMP		
12:00 – 12:50	<i>Potential JMP Presentation (TBD)</i> Open (16)		
1:00 – 1:50	<i>JMP Presentation (TBD)</i> SAS Staff (15)	<i>Using SAS Business Intelligence Tools to Generate Linked Reports</i> Ben Cochran (9)	<i>Data Processing in SAS® using the Hash Table Object</i> Delayne Stokke (13)
2:00 – 2:50	<i>Creating SAS data sets from HTML table definitions</i> Rick Langston, SAS Institute (2)	<i>Using PROC PHREG for Predictive Modeling</i> John Xu (12)	<i>SAS with Excel: A Winning Combination</i> LeRoy Bessler (7)
3:00 – 3:50	<i>Ad hoc data preparation for analysis using SAS Enterprise Guide</i> Wayne Thompson, SAS Institute (5)	<i>Two Dozen Ways to Get Data From Excel to SAS</i> Ben Cochran (10)	<i>Code Clinic/Meet Speakers</i> Delayne, John, LeRoy, Rick
4:00 – 4:30	Closing Session / Door Prize Digital Photo Frame, Computer Speaker System, SAS books Free registration to MWSUG		



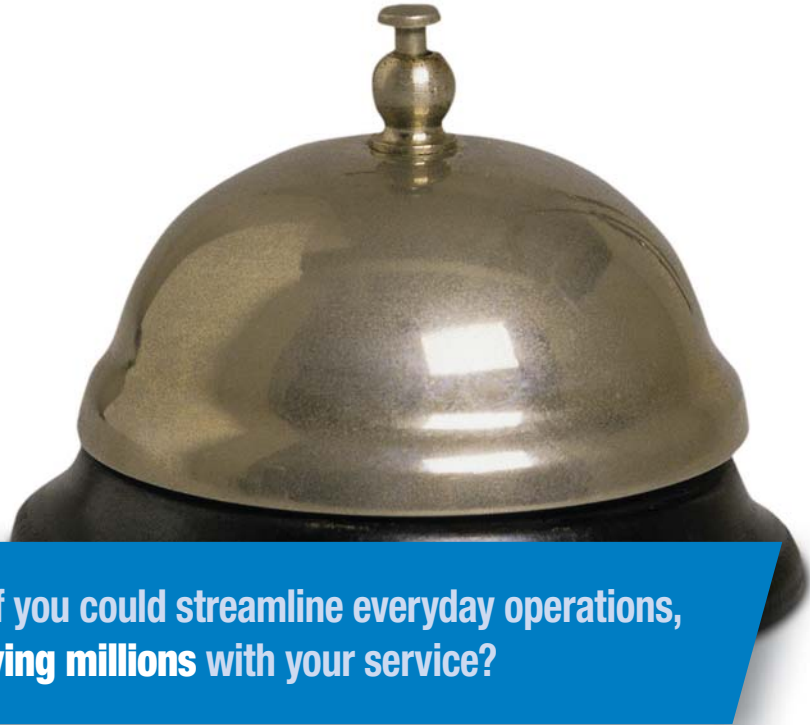
SAS Classes by Ben Cochran at Wells Fargo Financial

5/25	Introduction to the SAS Macro Facility
5/26	An Introduction to SQL
5/27	Advanced SQL Processing



JMP® Statistical Discovery. From SAS.

Exploratory Data Analysis | Design of Experiments | Business Visualization | Interactive Data Mining
Visual Six Sigma | Modeling | Quality Improvement | Statistics | Analytical Application Development



**What if you could streamline everyday operations,
satisfying millions with your service?**

You can. JMP makes statistical discovery quick and easy.

For 20 years, JMP software has brought the power of analytics to businesses around the world.

► www.jmp.com/efficient
to see how one of the world's
most successful operations
uses JMP



SAS and all other SAS Institute Inc. product or service names are registered trademarks or trademarks of SAS Institute Inc. in the USA and other countries. ® indicates USA registration. Other brand and product names are trademarks of their respective companies.
© 2010 SAS Institute Inc. All rights reserved. 5155US.0010

Thanks to Our Sponsors



PIONEER®
A DUPONT COMPANY



Presentation Abstracts

Keynote Speaker: Rick Langston, SAS® Institute

(1) "It's Five Years Later... Now Where Were We?"

ABSTRACT: I last gave the keynote at the IOWA SAS Users Group meeting back in 2005. It's hard to believe it's been five years! A lot has happened in that time. This presentation is meant to provide an overview of changes to the SAS System since then, and also with a look ahead to the next five years. Included in this presentation will be information on grid processing, multi-threading, cloud computing, ODS/Stat/Graph integration, along with other new features in SAS 9.2 and subsequent releases.

(2) Creating SAS data sets from HTML table definitions

Rick Langston, SAS Institute

ABSTRACT: This paper is a follow-up to my 2007 paper "Handling Large Stream Files with the '@string' Feature". In this paper I describe a SAS program that will read an arbitrary HTML stream and create a separate SAS data set for each <TABLE> definition in the stream. The variable names are determined from the table headings provided in the HTML. I build upon the techniques first described in the 2007 paper, and show new ways to accomplish the goals. Features shown include the MISCOVER option used in conjunction with COLUMN=, INPUT '@string' and INPUT '@expression', the useful CAT and CATX functions, ?? used with the INPUT function, and issues involving %INCLUDE vs. CALL EXECUTE.

(3) Scalability of Table Lookup Techniques

Rick Langston, Jody L. Graham, SAS Institute

ABSTRACT: This paper will examine the issues of memory and disk space consumption and performance considerations for various table lookup techniques using large amounts of data. These techniques include PROC FORMAT in association with the PUT function, the DATA step hash object, DATA step merging, the KEY= option of the SET statement, and PROC SQL. This paper will show performance comparisons of the different techniques as the amount of data increases, and will offer advice on decisions on which techniques to use in various circumstances.

(4) The Next Generation: SAS® Enterprise Miner™ 6.1

Wayne Thompson, David Duling, SAS Institute

ABSTRACT: SAS Enterprise Miner 6.1 delivers several new product enhancements to empower both business analysts and seasoned data miners to work more efficiently and produce improved results. A file import wizard is included for easy access to a broad range of input source types. Extended summary statistics for input variables are also generated to aid the analysts in defining variable roles and identify upfront data errors and trends during the data source definition process. The algorithmic suite has been extended to include linear and non-linear Support Vector Machine learning along with powerful LARS and LASSO variable selection. Interactive decision tree users will be able to model

multiple targets for multi-objective segmentation strategy building and predictive modeling. The Reporter node includes new graphics for delivering an analysis ready report journal to business constituents. Data miners can also share models via using the new model viewer application. A major emphasis has been placed on extended model deployment capabilities to include market basket scoring, native scoring in Teradata and optimized scoring code for delivering faster answers.

(5) Ad hoc data preparation for analysis using SAS Enterprise Guide

Wayne Thompson, I-Kong Fu, Mike Porter, SAS Institute

ABSTRACT: SAS Enterprise Guide is a popular application for conducting ad hoc data manipulation and data preparation for data mining and other analytics. This paper will walk through a few examples of data preparation, putting features of Enterprise Guide into action, as well as discuss integration points with popular SAS applications used for analytics such as SAS Enterprise Miner.

(6) It's All About Effective Visual Communication: Bessler's Favorite SAS Graphs

LeRoy Bessler PhD, Bessler Consulting and Research

ABSTRACT: This year at other venues, SAS Institute is expected to present "The Five Greatest Examples of Information Visualization in the History of SAS". For IASUG 2010, I will instead share with you the perspective of a regular guy, just a frequent, committed, hands-on user of SAS/GRAPH who is a creator of graphs with an emphasis on communication effectiveness and which do not require special software in order to be viewed. I don't know how many examples I will cover, but it will definitely be more than five.

My focus in this paper is on: (a) graphs suitable for management reports, for slide presentations, or for articles in journals, magazines, or newspapers; and (b) two excellent ways to produce dynamic graphs WITHOUT requiring the viewing user to have any extra plug-ins installed. By dynamic graphs I mean web-enabled graphs with pop-up labels (and a forward-and-backward link to/from a spreadsheet of the input data), as well as animated graphs that can be deployed on a web page or in a PowerPoint slide.

SAS/GRAPH was invented in 1979 and I have been using it almost that long. These graphs are the best that I have seen (and possibly personally developed) in my ongoing quest for getting the best out of SAS/GRAPH (and, since its availability, ODS) from the standpoint of communication effectiveness. To prepare, I will also be searching through other users' work (I have SAS conference proceedings back to 1981). So, it will not necessarily be a personal showcase. Only graphs for which there is SAS code provided will be shown.

Besides the paper published in the IASUG 2010 conference proceedings, the audience for the stand-up presentation will also get two easy-reference handouts: (a) my Principia Graphika (a checklist for communication-effective graphic design); and (b) a display of as many of Bessler's Favorite SAS Graphs as can be fit on one sheet.

(7) SAS with Excel: A Winning Combination

LeRoy Bessler PhD, Bessler Consulting and Research

ABSTRACT: SAS happens to be my personal favorite tool, but the world's commonest non-SAS tool for data presentation, and working with data, is Microsoft Excel. Other people might want your SAS report formatted as a spreadsheet.

Most of this abstract will make the case for Dynamic Data Exchange (DDE), but the presentation will open with much simpler, but high-value, non-DDE ways to create customized Excel reports with SAS.

To get more control than such simple solutions, SAS offers other non-DDE options, almost all of which are out of my scope. I love DDE, and I get requests nearly every week from all over the world for my DDE toolkit.

DDE can supercharge your use of SAS with Excel. You can develop SAS programs to load worksheets, and to format them maximally without point-and-click. Almost anything that you can do directly in Excel can also be done using DDE commands from your SAS program. You can access Excel data, even to the level of a specific cell, row or column, part of a row or column, or a range of contiguous rows or columns, or can work with an entire worksheet. Then you can write, read, or format data. Why would you want to run Excel from SAS? You can create a hands-off production job to be automatically scheduled by the computer to access and analyze the data, load the spreadsheet, format it, and attach the report to a SAS-dispatched email message. In any case, if you find yourself preparing the same highly formatted Excel report over and over, why not automate it?

The intended audience is all levels of SAS users who need to deliver information via Excel.

(8) Using SAS Arrays to Manipulate Data

Ben Cochran, The Bedford Group

ABSTRACT: The DATA step has been described as the best data manipulator in the business. One of the constructs that gives the DATA step so much power is the SAS array. This presentation takes the user on a tour of SAS array applications starting from a very elementary level to more advanced examples.

(9) Using SAS Business Intelligence Tools to Generate Linked Reports

Ben Cochran, The Bedford Group

ABSTRACT: This presentation starts with a SAS dataset and ends with reports being displayed through Web Report Studio. Along the way, a look is given to all the steps needed to make this happen. These reports are then front-ended by a BI dashboard display.

(10) Two Dozen Ways to Get Data From Excel to SAS

Ben Cochran, The Bedford Group

ABSTRACT: SAS has many ways to get data from Excel spreadsheets to SAS Data sets.

This paper takes a step by step approach to illustrate many of the ways to do this.

(11) Application Development with SAS Stored Process

John Xu, 1ST Consulting LLC

ABSTRACT: This presentation will show how to convert a SAS program into a Stored Process using SAS Enterprise Guide. We then show the user interface developed in MS Excel through SAS Add-in for MS Office and through web interface, without additional development work. Furthermore, we will discuss the process control, user access security, job queue etc. They are necessary for SAS programs that consuming large amount of disk space and CPU time.

(12) Using PROC PHREG for predictive modeling

John Xu, 1ST Consulting LLC

ABSTRACT: PROC PHREG is a popular SAS procedure for Proportional Hazard Model in Survival Analysis. This presentation will contains an introduction to Proportional Hazard Model, steps to run PHREG. Additionally, counting style input will be discussed in more details for time dependent variable. It will also demonstrate the details to generate model coefficients and baseline to be used in prediction.

(13) Data Processing in SAS® using the Hash Table Object

Delayne Stokke, Wells Fargo Home Mortgage

ABSTRACT: The hash table object introduced to the SAS Language in SAS9 allows the programmer to place data into an in-memory table that has fast lookup capabilities. In many situations, it provides superior performance to many other lookup techniques. Many times, long running processes that require sorting of a large dataset in order to append values from one or more smaller datasets can be re-written to use a hash table object (or objects) and see dramatically reduced run times.

In this presentation, I intend to help you understand how to use the hash table object to improve the efficiency of your SAS programs. I'll describe the hash table object; hash table keys and data; how the hash table relates to the Program Data Vector; available memory and memory requirements. I'll also show you some common coding techniques and provide examples that you can use to create your own solutions.

(14) Reduce your electron footprint: improve the efficiency of your SAS programs

Delayne Stokke, Wells Fargo Home Mortgage

ABSTRACT: Reducing your carbon footprint is a popular topic these days. But do you ever think about reducing your "electron footprint"? Writing efficient, scalable SAS® code is a skill that takes time to develop. This presentation will cover analysis, programming, and testing techniques that will help simplify complex programs and greatly improve overall program efficiency. This presentation will include tools and techniques for Base SAS; SAS/Connect; and SAS/Access.

(15) JMP Presentation (To be added, possibly 'Using JMP with SAS Data')

JMP staff, SAS Institute

ABSTRACT: Topic to be announced

Speaker Biographies

LeRoy Bessler A SAS user since 1978, Dr. LeRoy Bessler has shared his knowledge and experience with other users at conferences throughout the USA and in Montreal, London, Heidelberg, and Dublin. Though a SAS generalist with long experience in Base SAS, SAS macro language, and SAS tools for access to non-SAS data, his special strengths include communication-effective visual communication and reporting, highly formatted Excel reporting, web information delivery, SAS/GRAPH, ODS, Software-Intelligent Application Development for Reliability, Reusability, Extendibility, and Maintainability, and creation of unique tools to support the SAS BI server and its users. He is a regular contributor to VIEWS News, an electronic web newsletter of the VIEWS International SAS Programmer Community.



Ben Cochran, After more than 11 years with SAS Institute, Ben Cochran now heads his own consulting and SAS Training business, The Bedford Group. Ben has authored and presented several papers at SAS Users Group International Conferences. He has taught many SAS classes in Des Moines in the past years.



Rick Langston is the manager of the Core Systems Department within the Platform R&D Division at SAS Institute. Rick's responsibilities include PROC FORMAT, format processing, date/time processing, licensing software, SAS/TOOLKIT Software, and managing the staff for supporting various core-level subsystems in the Base product. He has delivered keynotes on various aspects of SAS for many regional and local SAS user group conferences in the past 10 years. Rick has been a SAS user for 27 years, 24 of which have been with SAS Institute.

Delayne Stokke has been a SAS programmer and analyst since 1986. He has presented papers at local, regional and international users group meetings, and has been co-chair of the MidWest SAS Users Group annual meeting on two occasions (2003 and 2007). Delayne works for Wells Fargo Home Mortgage in West Des Moines, IA, where he provides support and consultative services to SAS users.



Wayne Thompson is an Analytics Product Manager at SAS. His primary efforts are centered on bringing relevant product/solution feedback from customers to the SAS data mining development teams to extend SAS Institute's leadership position in the data mining market. He has been employed at SAS since 1992. During his tenure at SAS, Wayne also served as a Statistical Services specialist for the Education Division in which he developed and taught applied statistical courses as well as collaborated on several data analysis projects for clients from many industries. Wayne received his Ph.D. and M.S from the University of Tennessee in 1992 and 1987, respectively. During his PhD program, he was also a visiting scientist at the Institut Supérieur d'Agriculture de Lille, Lille, France where he taught applied data analysis courses.



John Xu is the Director of Consulting of 1ST Consulting LLC, a West Des Moines based consulting company specialized in SAS related services. He has over 20 years of SAS experience in Programming and Statistics. John served on MidWest SAS Users Group board for 10 years. He is currently coordinating the activities of Iowa SAS Users Group.



Iowa SAS Users Group:

Most active local SAS users group
Monthly meetings for over 7 years
Discounted SAS local classes
SAS library with over 70 books
Supported by SAS Institute

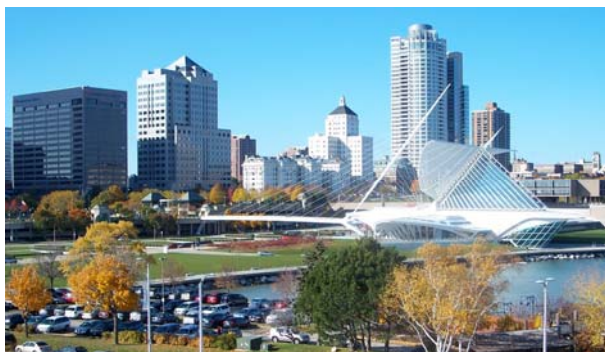
Quarterly Meeting:

2nd Thursday of Feb., May, Aug., Nov.
From 4:00 PM to 5:30 PM
Iowa Dept. of Education
Grime building, 2nd Floor
E14 and Grand at State Capitol

PLEASE VISIT WWW.IOWASASUSER.ORG FOR MORE INFORMATION

MidWest SAS Users Group 2010 Annual Conference

**Milwaukee, Wisconsin
October 10-12**



Conference LeRoy Bessler
Co-Chairs: Alexandra Riley
Craig Wildeman



PLEASE VISIT [HTTP://WWW.MWSUG.ORG/MIL2010](http://WWW.MWSUG.ORG/MIL2010) FOR MORE INFORMATION

Post-Conference Training

- **Date and time**

5/25/10 Introduction to the SAS Macro Facility
5/26/10 An Introduction to SQL
5/27/10 Advanced SQL Processing

- **Location**

Trainer Center Room A/B
Wells Fargo Financial
800 Walnut Street
Des Moines, IA 50309-3636



- **Direction and Parking**

Accessible through Des Moines Downtown Skywalk.
Parking is available on the street and in the ramp at 9th & Locust Streets.

- **Misc.**

Lunch is provided FREE at EMC Cafeteria. Light breakfast is provided in the classroom.

- **Special Offer I**

50% discount to full time students and individuals who are in between jobs (subject to availability, approval and verification).

- **Special Offer II**

Take 2 SAS class and receive a stainless steel mug.

- **Notice**

Profit from these SAS classes will be used for the One-day conference. Iowa SAS Users Group can only provide free conference registration with your support!

- **Additional Local SAS Classes**

1ST Consulting is offering 3 SAS Enterprise Miner training classes in the week of May 10-14, 2010.

For details, please contact John Xu (johnxu@1st-consulting.com, 515-778-4093) or download the class announcement at www.1st-consulting.com/SAS_Training_Class_2010_E_Miner.doc.

Course Description I

Introduction to SAS® Macro – (5/25/10, 8:30 am – 4:30 pm)

The Audience:

SAS users who have taken an introductory level course and want to further their SAS skills.

The Course Format:

The course is mostly lecture with some time for exercises, demonstrations, and working on problems students bring to class. The exercises at the end of most chapters use data sets shipped with the SAS system. Students can also work through the exercises at their own pace after the conclusion of the course. This course can be taught as a public course or as an on-site course. Comprehensive textbooks for students are included in the course fee.

The Benefits:

Students who take this course will acquire a deeper understanding of the SAS System and especially the SAS macro. This understanding will help the student to write more efficient programs as well as utilize more features of the SAS system. In some cases, this translates to writing more concise programs.

The Instructor:

The course will be taught by Ben Cochran, formerly an instructor with SAS Institute for 11 years, who is certified to teach over a dozen SAS courses. Ben is now an independent consultant and trainer who is also a SAS Institute Alliance Partner. Before joining SAS Institute, Inc. in 1985, Ben initially honed his teaching skills in the academic arena as a college professor for nine years.

Course Contents:

- (1) Introduction :
Course Overview, The Purpose of the Macro Language, How the Macro Language Affects SAS Processing, Summary.
- (2) SAS Macro Variables :
Processing the Macro Language, Macro Variables, Resolution Considerations, Exercises, Summary.
- (3) SAS Macros :
Macro Definitions and Calls, Macro Options, Tracing Macro Processing, Exercises, Summary.
- (4) Referencing Environment:
Global and Local Referencing Environments, Exercises, Summary
- (5) Programming Statements
Introduction, Syntax, Exercises, Summary
- (6) Macro Functions
Introduction, Manipulating Character Strings, Evaluating Expressions, Exercises, Summary
- (7) The DATA Step Interface
Introduction, The SYMGET Function, The SYMPUT Function, Common Errors, Exercises, Summary

Course Description II

(2) SAS® Programming With PROC SQL (2 classes) – (5/26/10 - 5/27/10, 8:30 am – 4:30 pm)

The Audience:

SAS users who have taken an introductory level course and want to further their SAS skills.

The Course Format:

The course is mostly lecture with some time for exercises, demonstrations, and working on problems students bring to class. The exercises at the end of most chapters use data sets shipped with the SAS system. Students can also work through the exercises at their own pace after the conclusion of the course. This course can be taught as a public course or as an on-site course. Comprehensive textbooks for students are included in the course fee.

The Benefits:

Students who take this course will acquire a deeper understanding of the SAS System and especially the SQL procedure. This understanding will help the student to write more efficient programs as well as utilize more features of the SQL procedure. In some cases, this translates to writing more concise programs.

The Instructor:

The course will be taught by Ben Cochran, formerly an instructor with SAS Institute for 11 years, who is certified to teach over a dozen SAS courses. Ben is now an independent consultant and trainer who is also a SAS Institute Alliance Partner. Before joining SAS Institute, Inc. in 1985, Ben initially honed his teaching skills in the academic arena as a college professor for nine years.

<p>Class I: An Introduction to SQL</p> <p style="text-align: center;">Introduction to PROC SQL</p> <ul style="list-style-type: none"> • Terminology • Course Data <p>Retrieving Data from ONE Table</p> <ul style="list-style-type: none"> • Overview of the SELECT statement • Selecting Columns from a Table • Creating New Columns • Sorting Data • Retrieving Rows • Grouping Data <p>Retrieving Data from SEVERAL Tables</p> <ul style="list-style-type: none"> • Introduction to Joins • Combining Queries with SET Operators • Creating Tables <p>Examining Business Applications</p>	<p>Class II: Advanced SQL Processing</p> <p>Advanced Data Selection Techniques</p> <ul style="list-style-type: none"> • Overview of Proc SQL • Using Sub queries • Using Correlated Sub queries <p>Creating Indexes and Views</p> <ul style="list-style-type: none"> • Introduction to Indexes • Creating and Deleting Indexes • Creating and Using SQL Views <p>Programming with Proc SQL</p> <ul style="list-style-type: none"> • Using Options to Debug Queries • Improving Query Performance • Using the Macro Facility with Proc SQL <p>Accessing NON-SAS Data (DBMS)</p> <ul style="list-style-type: none"> • The Environment • Six Steps to Building a Data Mart • Accessing Oracle Tables • Accessing DB2 Tables • Accessing Oracle Tables • SAS V8 Enhancements to SAS/ACCESS <p>Advanced Operations Using Proc SQL</p> <ul style="list-style-type: none"> • Maintaining Tables • Using Dictionary Tables • Comparing Tables • Counting Duplicate Rows in a Table • Using ODS with Proc SQL
--	---



SAS SPECIALISTS

Service Area

Data Warehousing
Data Mining
Reporting
Data Management
Application Development
Recruiting Services
Technical Support
Local Training Classes

Industry Experience

Insurance
Financial Services
Health Care
Marketing
Pharmaceutical

SAS[®] Enterprise Miner

Three Local Classes

**An Overview Using Enterprise Miner
Advanced Topic Using Enterprise Miner
Decision Tree**

May 10 – 14, 2010

Downtown Des Moines, at Wells Fargo Financial Training Center

Taught by Professor Morgan Wang, Central Florida University

For more information, please contact John Xu, 515-778-4093, johnxu@1st-consulting.com

Scholarship Program

For Post-conference SAS classes

Iowa SAS® Users Group will pay for up to 6 students to attend the professional post-conference SAS training classes. Full time college students and people in between job may apply.

Please complete the form below. You may want to attach a resume, especially if you are not a student. Please send your application, plus the completed conference and class registration form by e-mail to John Xu at johnxu@1st-consulting.com. If you have any question, please contact John as well.

Name: _____ E-mail: _____

College: _____ Major: _____

Rank the SAS class desired: SAS Macro _____ Intro to SQL _____ Advanced SQL _____

Please answer the following questions. Your answers will be used in the selection process to determine the winners.

- How long have you been using SAS software? _____
- Where did you first learn SAS? _____
- What was the class? _____
- Why do you think it is important to know SAS? _____
- What are your future plans for using SAS? _____
- Will you attend the one-day conference? Yes No
- Your current status: Junior _____ Senior _____ M.S. _____ Ph. D. _____ Other _____

The deadline for application is 5/7/10. You will be notified by e-mail by 5/14/10 for post-conference class.

Conference Registration Form

IOWA SAS® USERS GROUP, THE 4TH DES MOINES ONE-DAY CONFERENCE
Monday, May 24, 2010

Name: _____

Company _____

Title: _____

Address: _____

City/State/ZIP: _____

E-mail (required): _____ Phone: _____

Lunch choice: _____ smoked turkey _____ honey ham _____ roast beef _____ none
(Sandwich box lunches include your choice of sandwich, seasonal fruit salad, cookie, soda and one side item)

Please complete, copy/paste and email your completed registration to:

Xiaoping Wang at dsm1day@yahoo.com Phone: (515) 242-5986

Registration Fee: Free Early Registration by Friday May 14, 2010
\$50 per person for Late Registration after May 14, 2010,

Cancellation Policy: Please email you cancellation notice to dsm1day@yahoo.com.

* A confirmation e-mail will be sent within 3 days.

* For multiple registrations, please submit one registration form for the contact person, plus a list of additional attendees' name, e-mail address, and phone number.

** Due to facility limitation, Iowa SAS Users Group reserves the right to decline any registration at any time. When feasible, we will create a waiting list.

Class Registration Form

IOWA SAS® USERS GROUP, THE 4TH DES MOINES ONE-DAY CONFERENCE
May 25-27, 2010

Enrollment Requirements

Proficiency in MS Window environment. Prior SAS knowledge or introduction level SAS training.

Please mark the SAS Classes to attend:

() \$400 * **Introduction to the SAS Macro Facility** (5/25/10)

() \$400 * **An Introduction to SQL** (5/26/10)

() \$400 * **Advanced SQL Processing** (5/27/10)

* Add \$50 if you need a laptop computer with SAS Learning Edition installed for the class.

* Add \$50 for late registration after Friday, May 14, 2010.

_____ <= **Total Fee**

The registration fee includes lecture notes, office supply, lunch, refreshment for breaks.

Special Discount: 50% off for full time students and individuals who are between jobs.

Name: _____

Company: _____

Address: _____

City/State/ZIP: _____

E-mail: _____ Phone: (_____) _____ - _____

You may e-mail the completed registration form to: johnxu@1st-consulting.com. Please make the check payable to *Iowa SAS Users Group* and mail it with a copy of your registration form to:

John Xu
Iowa SAS Users Group
4652 Valley View Ln
West Des Moines, IA 50309

Email:
johnxu@1st-consulting.com

Payment prior to the class is required. We accept both company and personal Check. Sorry, no credit card is accepted. A confirmation e-mail will be sent to you within 48 hours.

Registration Cancellation Policy

Iowa SAS Users Group reserves the right to cancel the class at any time and for any reason with a full refund.

Attendee may cancel registration and receive a full refund of course fee at any time before the early registration due date of May 14, 2010. After that date no refund is available, but substitution is accepted with prior notification.

Question?

For any question, please contact John Xu by email at johnxu@1st-consulting.com or by phone at 515-778-4093.

* YOU WILL RECEIVE AN EMAIL CLASS REMINDER A FEW DAYS BEFORE THE STARTING DATE WITH MORE DETAILS. *